



Where Networks Converge

- Enterprise Class RAS
 - Redundant Internal Pathing
 - Redundant Power
 - Redundant Control
 - Non-Disruptive SW/FW Upgrades
 - Passive Backplane
- Scalable 8 to 128 ports and Beyond
- Self-Configuring Ports
 - Fabric
 - Loop(Public and Private)
 - InterSwitch
 - Public/Private Translation
- Cost-effective, modular scalability
- Zoning
 - Hardware
 - Name Server
 - Broadcast
- Web-based and/or SNMP configuration management
- User Port Alias
- Statistical and diagnostics monitoring
- Simple Name Server (registers all fabric devices and provides state-change notification)
- Multicast service
- Interoperates with entire FC/9000 Family

The FC/9000-64/128: Introducing the First Enterprise-Class Fibre Channel Switch

The FC/9000-64/128 Fibre Channel Switch from INRANGE Technologies provides IT managers with the industry's most scalable platform for migrating Storage Area Networks (SANs) into a true-enterprise-class environment.

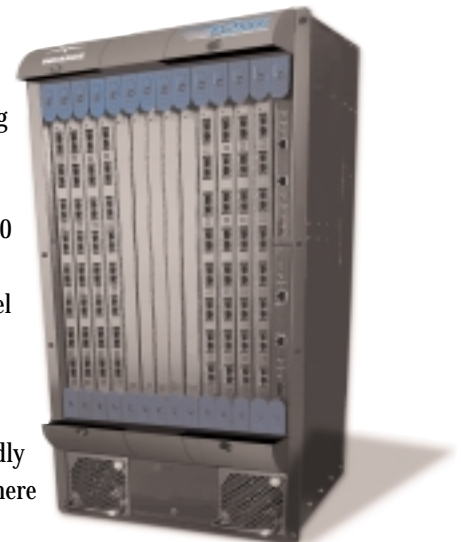
Delivering gigabit-per-second bandwidth for up to 128 Fibre Channel connections, the FC/9000 supplies a robust, high-speed backbone infrastructure for controlling server/storage connectivity and a centralized point from which to manage and grow switched storage networks efficiently and cost-effectively.

The FC/9000-64/128 expands easily via 8-port I/O modules and provides the same level of performance to attached devices regardless of its switch capacity or the diversity of the SAN implementation that it supports. The FC/9000 has been designed with all of the high-reliability, availability, and serviceability (RAS) features that are hallmarks of INRANGE's large-scale switching systems supporting ESCON Storage and Communications Switching networking applications worldwide.

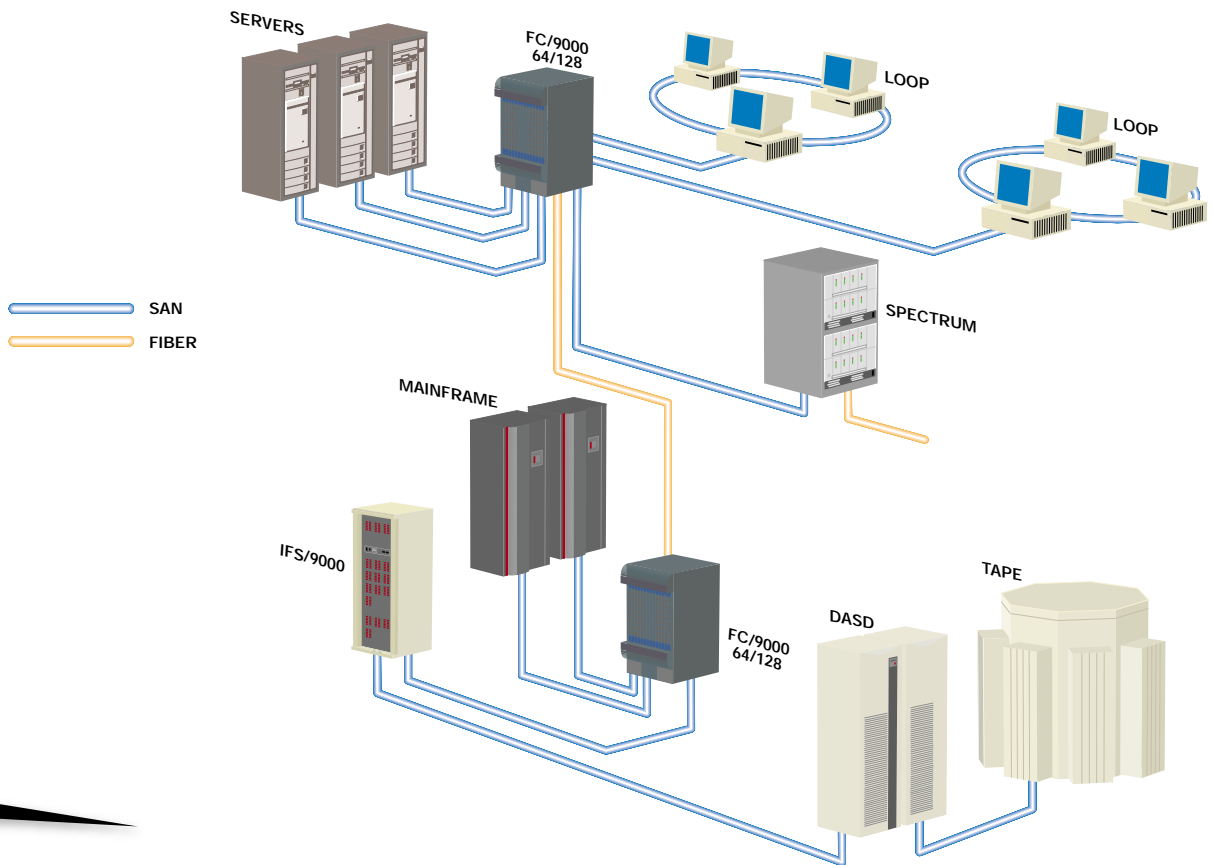
The FC/9000 architecture supports ANSI standards and its network management system is open and flexible. The system features self-discovering ports, which automatically sense the attributes of end nodes and configure them as the switch fabric evolves, while the network is up and running. Operators can view and modify system configuration through a web-based and/or SNMP interface, and have a single point of access to levels of switch information ranging from simple monitoring to detailed diagnostics.

An Infrastructure for Enterprise-Wide SANs

The FC/9000-64/128 is part of the INRANGE InVision (IN-VSN) family of storage networking solutions that enable IT planners to build an infrastructure on which tomorrow's mega-storage networks can run. Our family of FC/9000 Fibre Channel Switches, scalable from 8 to 256 ports, can be integrated with INRANGE channel management, wavelength division multiplexing, and SCSI bridging technologies. Through this integration, legacy equipment can be network-connected, and stored data can be accessed rapidly and reliably via wide area transport, from anywhere and at any time.



S P E C I F I C A T I O N S												
FEATURES			PERFORMANCE			MAINTAINABILITY			MECHANICAL			ENVIRONMENTAL
FIBER CHANNEL STANDARDS	PORT TYPES	CLASSES OF SERVICE	MAXIMUM FRAME SIZE	PORT SPEED	LATENCY	THROUGHPUT	DIAGNOSTICS	HOT SWAP-MODULES	WIDTH	HEIGHT	DEPTH	OPERATING CONDITIONS
FC-PH Rev 4.3 FC-PH-2 FC-PH-3 FC-AL Rev 4.5 FC-AL-2 Rev 7 Draft FC-FLA FC-GS-2 FC-FG FC-PLDA FC-Tape FC-VI FC-SW-2 (When Released) Fibre Channel Element MIB	F_Port FL_Port (Public) E_Port TL_Port (Private to Public Bridging) SL_Port (Segmented Private Loop) All Ports Self-Discovering	Class 2 and 3 Class 1 (Intermix) RPO	2148 Bytes (2112 Payload)	1.0625 Gbps	.6 to 3us Cut Through Routing	Class 2/3 101.8 MBs Class 1 103.3 MBs	Power-on self-test of all Major Modules except Media Modules Field selectable System modules Tests including media modules	Power Supply FCM FSW FIO Fan Modules Dual Power -AC/DC- Copper and Optical GBIC's	19 in	33.25 in	22 in	Temperature: 10 - 40° C Humidity: 10% - 80% non-condensing Altitude: 0 - 10,000 feet



Where Networks Converge

INRANGE Technologies Corporation
 13000 Midlantic Drive
 Mount Laurel, NJ 08054
 phone: 856.234.7900
 fax: 856.778.8700
 toll free: 800.222.0187
 www.inrange.com

Multiple site and legacy SAN integration configurations are accomplished via INRANGE's many fibre channel-ready products.

INRANGE Technologies Corporation is a member of the Fibre Channel Association, the FibreAlliance, and the Storage Networking Industry Association (SNIA)

Proud to be a member of the SPX family of High Value Companies

